

CSforAll

Technical Support and Grant Overview

APRIL 5, 2024



This material is based upon work supported by the National Science Foundation Award 2318592. Any opinions, findings, conclusions, or recommendations expressed in this material are those of the author(s) and do not necessarily reflect the views of the National Science Foundation.



Anna Suarez
President &
Owner



Elizabeth Tobias
Project Director,
CSforALL Support



Angie Prindle
Project Manager



Hannah Schwarze
Research
Coordinator

TRIVIUM CONSULTING PRESENTERS

GOAL

To support as many competitive proposals for **small or medium CSforAll RPP** projects as time and resources permit.

AGENDA

- CSforAll Solicitation Review
- NSF submission Information
- Support Details
- Q&A
- Exit Survey

IMPORTANT DATES

- **April 8, 2024** – CSforAll Support Survey Due by EOD
- **June 4, 2024** – CSforAll Proposal Due by 5PM Submitters Local Time

ELIGIBILITY

- **IHEs**
- **Non-Academic Nonprofits**
- **Tribal Governments**

CSforAll SOLICITATION OVERVIEW

CISE

CISE advances research, innovation and education in computer science, information science and computer engineering fields.

CSforAll SOLICITATION

The CSforAll solicitation is an established grant program with annual recurring deadlines from the NSF Directorate for STEM Education (EDU) and the Directorate for Computer and Information Science and Engineering (CISE)

RESEARCH and RPPS

CSforAll: Research and RPPs
Provide all US students with the opportunity to participate in Computer Science (CS) and Computational Thinking (CT) education in their schools.

CSforAll

STRANDS AND PROPOSAL SIZE CLASSES

Trivium's supports will be for PK-8, HS, or Pathways strands at the Small and Medium Levels

STRANDS

- PreK-8
- High School
- PreK-14 Pathways
- Research

PROPOSAL SIZE CLASSES

- Small
- Medium
- Large



CSforAll

STRANDS

Pre K-8: RPP

Design, develop, pilot materials that integrate CS/CT into PK-8 classroom

High School: RPP

Preparing and supporting teachers to teach rigorous CS curriculum

PreK-12 Pathways: RPP

Supporting Districts to incorporate CS/CT pathways PK-12 and into higher ed and/or workforce.

RESEARCH

Building high-level knowledge in the field

All Project Strands Must Address Underrepresentation

CSforAll

SIZE CLASSES AND FUNDING LEVELS

Trivium's supports
will be for PK-8, HS,
or Pathways strands
at the Small and
Medium Levels

Small RPP

\$300K; 3 yrs; 12-13 awards

Initial steps to build a strong and well-integrated RPP - build and/or establish partnership, exploration of research, piloting implementation

Large RPP

\$2M; 4 yrs; 3 awards

Significant scaling of an evidence-based approach and implementation studies by an established RPP team that has demonstrated sustainability

Medium RPP

\$1M; 3 yrs; 6 awards

Support promising approaches and feasibility studies by a well-defined RPP

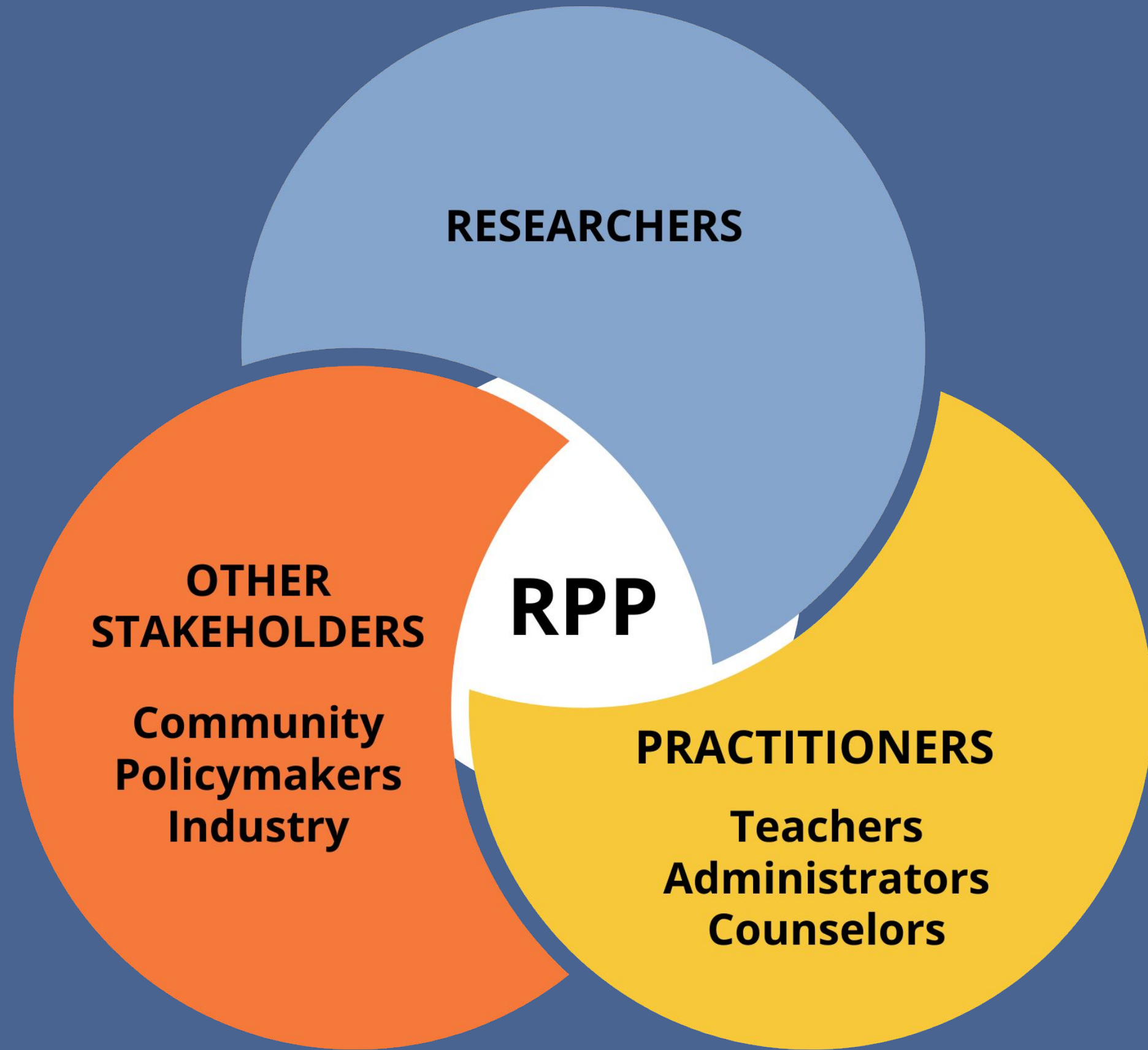
RESEARCH

\$750K; 3 yrs; 4-5 awards

Distinct in that the Research strand has one award level only

CSforALL

RESEARCHER
PRACTITIONER
PARTNERSHIP (RPP)



CSforALL

RESOURCES

CSforALL.org

<http://researchandpractice.org/csforall>

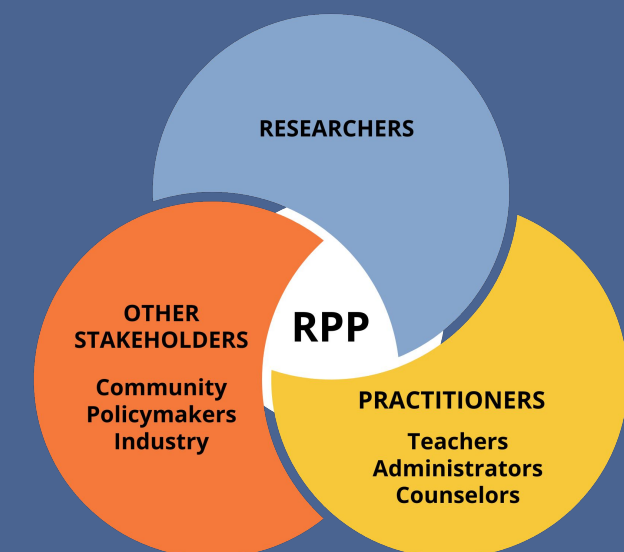
<https://journals.sagepub.com/doi/10.3102/0013189X16631750>

<http://www.carnegiefoundation.org/>

<http://rpp.wtgrantfoundation.org/>

<http://researchandpractice.org/>

<http://learndbir.org/>



NSF MERIT REVIEW CRITERIA

INTELLECTUAL MERIT & BROADER IMPACTS

Intellectual Merit

How does your project advance the field?

Broader Impacts

What potential does your project have to impact society?

SOLICITATION SPECIFIC CRITERIA

BROADENING PARTICIPATION IN COMPUTING

This program solicitation is particularly interested in Broadening Participation in Computing (BPC) to support the full spectrum of diverse computing talent, including groups that have been traditionally underrepresented or under-served in computing.

1. Does the proposal identify the characteristics and needs of the intended populations to be served?
2. Does the proposal include specific plans or strategies for addressing or accommodating the particular needs of participants of the intended populations?

Proposals that do not adequately address these additional criteria will be declined.

WHERE TO SUBMIT

MAKE SURE YOUR ORGANIZATION IS REGISTERED
WITH SAM.GOV

Research.gov

Grants.gov

WHAT TO SUBMIT

PROPOSAL COMPONENTS

- **Cover Page**
- **Project Summary**
- **Project Description**
- **References Cited**
- **FEOR**
- **Data Management Plan**
- **Post doctoral/Graduate Mentoring Plan**
- **Budget/Budget Justification**
- **Letters of Collaboration**
- **Biosketches (SciENCv)**
- **Synergistic Activities**
- **Current and Pending (SciENCv)**
- **Collaborators and Other Affiliations**
- **List of project personnel**

TRIVIUM SUPPORTS

Please share the status of your project/idea and the supports you believe will best serve your efforts by opening the survey and filling it out along with us!



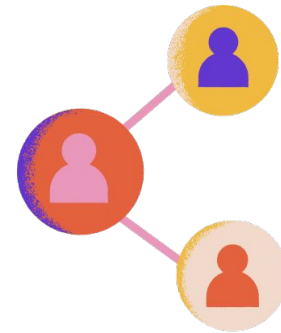
[CSforAll Support Webinar Exit Survey](#)

TRIVIUM SUPPORTS



Ideation & Planning

- Creating a logic model
- Defining a theory of change
- Defining a rationale
- Aligning the project idea with the solicitation



Networking

- Finding a research partner
- Finding practitioner partner(s)
- Finding an external evaluator
- Building an advisory board

TRIVIUM SUPPORTS



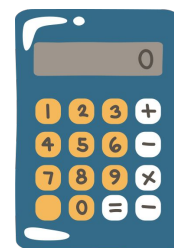
Resubmission

- Review panel comments
- Prioritize and address



Project Description

- Feedback
- Editing



Budget

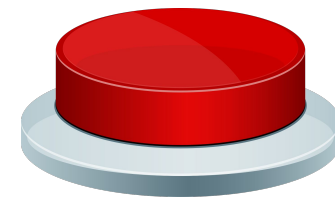
- Justification
- Cost categories

TRIVIUM SUPPORTS



Supplementary Documents

- Project Summary
- FEOR
- Data Management Plan
- Post doctoral/Graduate Mentoring Plan
- Letters of Collaboration
- Biosketches (SciENCv)
- Synergistic Activities
- Current and Pending (SciENCv)
- Collaborators and Other Affiliations
- List of project personnel



Submission

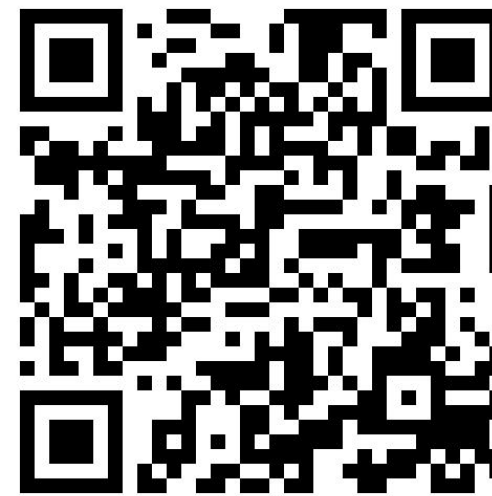
- SAM.gov
- Research.gov
- Grants.gov

DO YOU HAVE QUESTIONS?

Please post your questions in the
Q&A Box



NEXT STEPS



Complete the
Survey
by April 8

[CSforAll Support Webinar Exit Survey](#)

Outreach over the next 7-10 days, beginning after 4/12, to connect participants with Trivium team members.

THANK YOU

Communication

CSforAllSupport@TriviumConsulting.com

Resources

[CSforAll | Trivium Consulting](#)



This material is based upon work supported by the National Science Foundation Award 2318592. Any opinions, findings, conclusions, or recommendations expressed in this material are those of the author(s) and do not necessarily reflect the views of the National Science Foundation.